

PACT

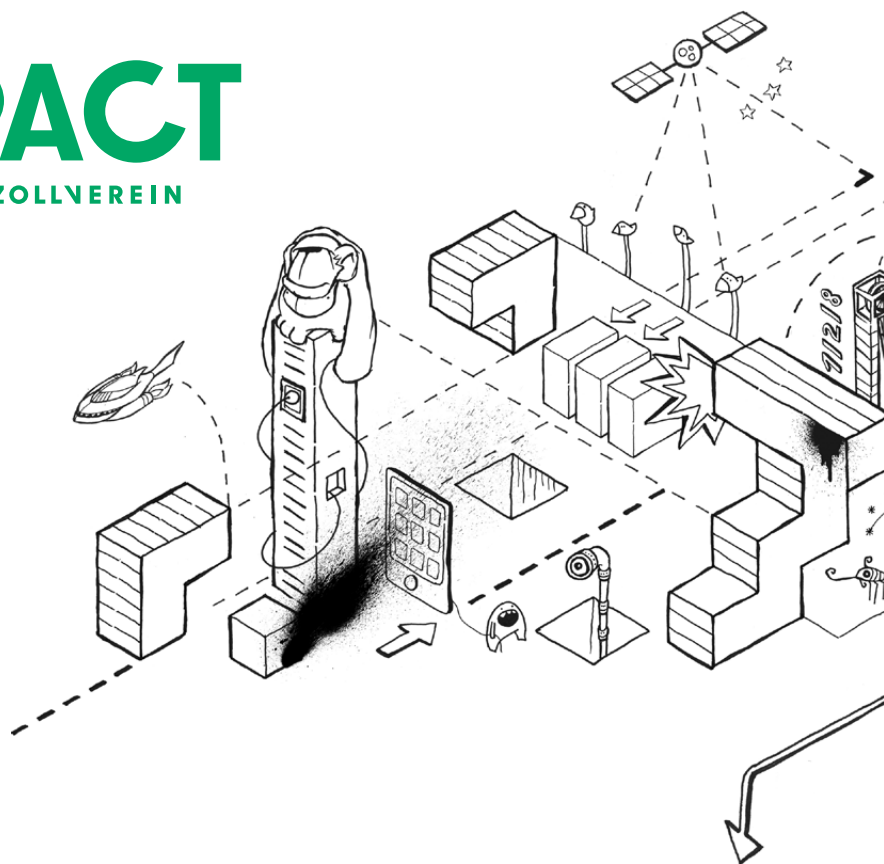
ZOLLVEREIN

CALL FOR ENTRIES
RESEARCH RESIDENCIES

1/2/8 – URBAN FRICTIONS

RESEARCH FESTIVAL WITH
RESIDENCIES, TALKS, WORKSHOPS
AND PUBLIC MOMENTS

07.05. – 02.06.2018



In Spring 2017, PACT launched 1/2/8 a new, central and long-term research and development format with a special focus on the connection between knowledge and actions. The format offers substantial time and space for practices of cooperation between people, objects, space, technology and experimentation.

As the focal point of this chapter, the city will become a setting for artistic, social and political activity in which the clash of different infrastructures, needs and living realities gives rise to complexity and productive friction. Over the course of the festival period, forums, project presentations, open laboratory visits and cooperative field studies will introduce participants to new perspectives and offer them time and space in which to explore their own ideas. 1/2/8 – URBAN FRICTIONS brings together people concerned with studying, changing or escaping the complex structure of the city and its effects.

Over the course of several weeks, the edition invites participants from the fields of art, science, journalism, urbanism, architecture and other broader disciplines, to engage in individual research as well as joint encounters, exchanges and experiments during symposia, open labs, talks, lectures, gatherings and presentations.

**APPLICATION
DEADLINE:
FEBRUARY 19, 2018
(17 PM)**

We only accept residency applications submitted via our online residency application process:

[www.pact-zollverein.de/en/
platforms/128-research-festival](http://www.pact-zollverein.de/en/platforms/128-research-festival)

A RESIDENCY CAN INCORPORATE THE FOLLOWING:

- Studio space (from 69 to 173 sq. m.)
- Local accommodation (max. 6 people)
- Weekly grant allowance of 500€ for all of the residency project participants (max. 6 people)
- Travel costs covering one journey only per participant to and from PACT Zollverein (subject to prior agreement)
- Technical equipment (by arrangement and subject to availability)
- Possible lectures, workshops, exhibitions or performances (at short notice and subject to agreement)

CONTACT

Simone Graf & Matthias Mohr
Fon +49 (0)201.289 47 12
simone.graf@pact-zollverein.de
matthias.mohr@pact-zollverein.de
www.pact-zollverein.de

PACT Zollverein / Choreo-
graphisches Zentrum NRW
are supported by:

Ministerium für
Kultur und Wissenschaft
des Landes Nordrhein-Westfalen



STADT
ESSEN KULTURBURO

KULTUR RUHR GmbH

A project within the framework of the
Alliance of International Production Houses
supported by the Federal Government
Commissioner for Culture and the Media.